



2022 SUSTAINABILITY REPORT

FOREWORD FROM OUR CO-FOUNDERS

ORIS is building up over a simple idea: materials data and environmental engineering can be leveraged in order to bring more capacity to the entire infrastructure ecosystem, to serve us all.

As engineers we have a responsibility to build functional infrastructure for people. As citizens we need those to be also inclusive and with reasonable public costs over time. As passionate professionals we also want to share our knowledge and support decision making processes in this huge and complex sector. We value:

- Transparency: our assumptions, algorithms, methods are opened, described, audited and verified with the most advanced standards and organizations.
- Performance: with a very strong engineering backbone in materials and infrastructure, we are demanding with ourselves, as with our projects and platform deliveries.
- Inclusion: we value variety and truly believe in autonomy to unlock the potential of each.

Together we aim at reconciling technology, business purpose and work atmosphere into a dynamic and meaningful initiative for our sector.

With this first ESG report, we imprint our strong willingness for progress and a more balanced approach to business.



*Nicolas MIRAVALLS,
Chief Executive Officer*

*Renaud DE MONTAIGNAC,
Chief Operating Officer*

ORIS is the first construction materials platform for a smart use of resources and low impact infrastructure, based on materials data knowledge and sharing.



Geolocation of local construction materials

Whole life cycle calculation of carbon impact from projects and construction materials



Early due diligence and Impact assessment of infrastructure designs with the potential to lower:

- costs by 15%-30%
- carbon footprint by up to 50%
- maintenance needs by up to 70%
- use of natural resources by up to 80%

Identification of measures to improve resilience to climate change and road safety



Identification of optimal construction materials transportation routes in real time to lower costs and carbon footprint

2022:

OUR TAKE-OFF YEAR

ACTIVITY

After being incubated in the Holcim Innovation Center and launched as an independent company in October 2021, the year 2022 was the first full commercial year for ORIS as a neutral entity.

This first year of operations has confirmed the market's interest and readiness for digital solutions that bring more efficiency and sustainability in infrastructure construction. ORIS is also recognized for its unique expertise on the market.

Our year was marked with several milestones:

- Revenues were multiplied by 6
- Our commercial pipeline is increasingly strong
- We have extended from our core business in road construction to railways and other linear transportation infrastructure projects

ORIS was also the winner of two awards in the UK:



252 km of roads and railways assessed by our project advisory team

6 advisory projects achieved on roads and railways



80% to 100% advisory project contract renewal rate

444 registered users for our self-service platform



Enabling Digitalization of the One-Hour Train Project in Finland

The One-Hour Train is a rapid rail link connecting Turku and Helsinki. It is one of Southern Finland's major transportation projects, as part of the country's ambitious climate plan. The project covers 100 km between Espoo and Salo, which includes 113 bridges, 22 tunnels and more than 200 roads.

ORIS supports Turun Tunnin Juna (TTJ) by bringing to the 150 project engineers a digital tool to evaluate more sustainable and circular solutions in a short period of time. Using ORIS, the project team is able to perform comparative analysis of multiple rail track scenarios within local standards and railway infrastructure regulations. Based on data on local materials sourcing, the dashboard provides instant impact assessment on carbon emissions, costs, circular options and resilience to climate change.



INNOVATING FOR MORE SUSTAINABILITY

SUSTAINABILITY

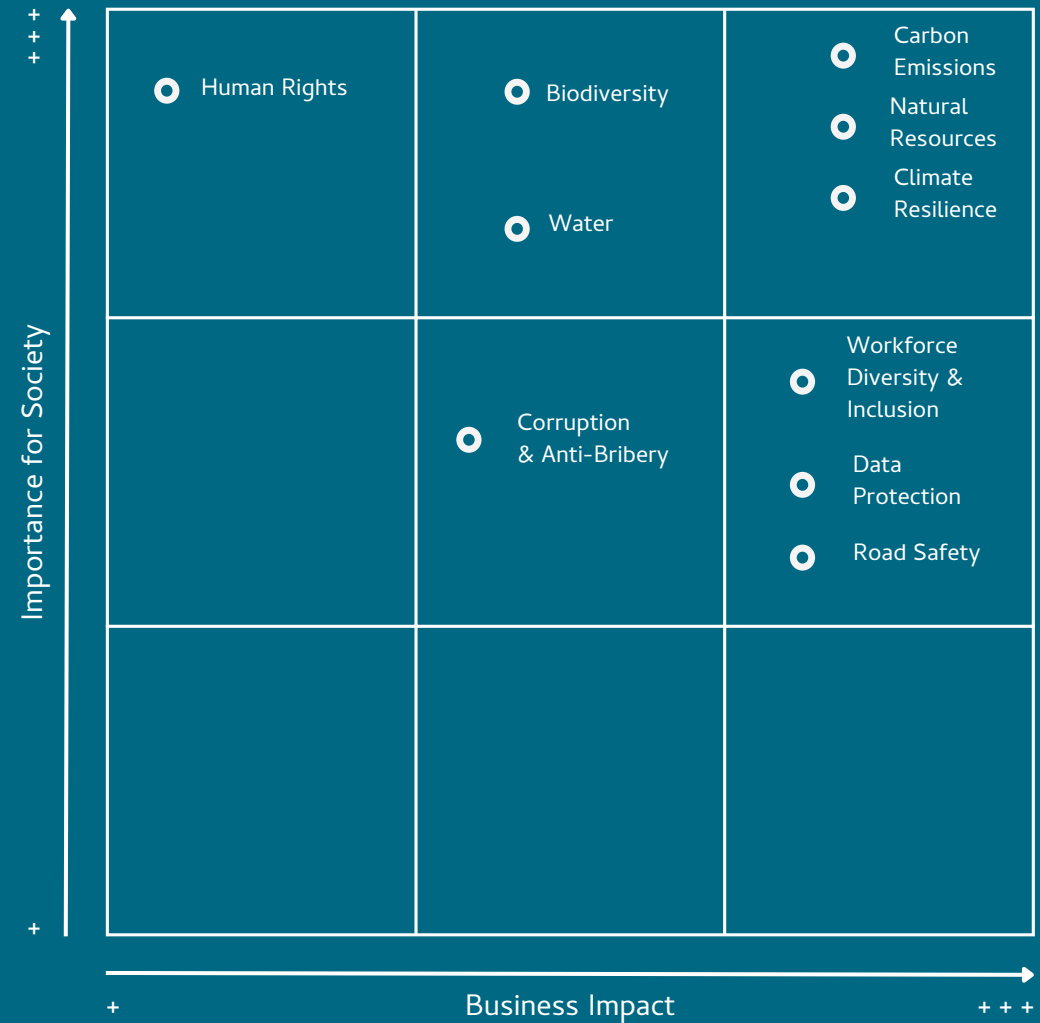
Sustainability is at the heart of ORIS's purpose and vision. By bringing together three expertises - construction materials knowledge, environmental engineering and advanced digitalization (AI/machine learning) - our platform brings more efficiency and sustainability to the construction value chain.

ORIS allows early modelling and visualization of how construction materials will perform at construction time and over their lifetime. By bridging the knowledge gap, we enable all actors of infrastructure design and construction to make the most-informed decisions in terms of carbon footprint, natural resources usage, resilience to climate change, costs, maintenance needs.

By further developing our platform into micro-services, our ambition is to democratize access to construction materials data and knowledge for all.

As a committed actor towards sustainability, we ambition to act responsibly in our every day operations, from our environmental footprint to our social impact and our governance policies.

ESG Material Issues



OUR CARBON FOOTPRINT

The calculation of the carbon footprint of ORIS was done with the help of the ADEME methodology: "Methodology for greenhouse gas emissions assessment".

To calculate the various scopes, data was collected regarding the impact of using our cloud solutions and our offices consumptions. A questionnaire was completed by all people working for ORIS (internal and contractors) to determine their personal impact from business activities.

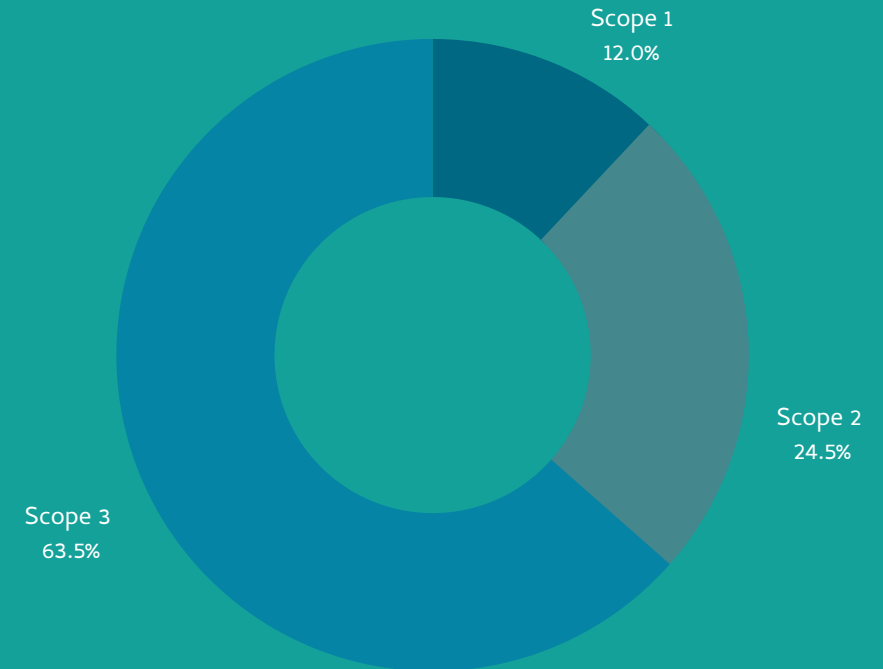
The items assessed included office energy consumptions, impact of business travel, daily commute, IT equipment and servers.

The vast share of our carbon footprint resides in our scope 3 (mainly from business travels and daily commutes).

Scope 1	Office fuel consumptions
Scope 2	Electricity consumptions (offices, internet and videoconferences) + Data use
Scope 3	Office IT equipments + Daily commutes + Business travels

129 tons CO2 eq

Estimated Carbon Footprint for ORIS Activities in 2022



1 for 124

tons of CO2 eq. emitted by ORIS vs. tons potentially saved

REDUCING THE ENVIRONMENTAL IMPACT OF INFRASTRUCTURE PROJECTS

Using ORIS offers a great potential to reduce the impact of infrastructure projects, by offering alternative designs that can reduce the carbon footprint, the volume of natural resources used and water consumption.

ORIS's carbon calculation models are based on recognized international norms (ISO14067, EN 15804, ISO 21930) and have received an assurance statement in 2022 by Intertek.



16,000 tons of carbon emissions

Equivalent to the yearly carbon emissions of 16,000 new cars in France



371,000 tons of natural resources

Equivalent to the volume of materials needed to build 250 average individual homes in France



USD 14M saved

Equivalent to the cost of 50 km of local roads in France



16 ML of water

Equivalent to the annual water consumption of 300 individuals in France

ORIS Potential Positive Impact through Identified Savings for our Customers

-31% to -14%

Range of carbon decrease potential

-60% to -1%

Range of natural resources consumption reduction potential

-54% to -20%

Range of cost reduction potential

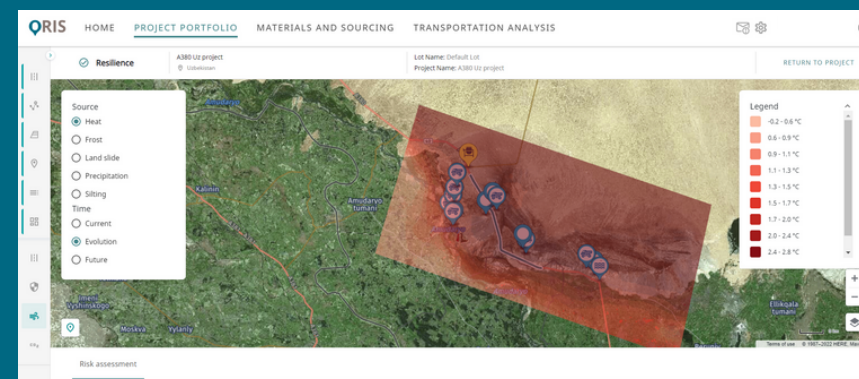
Data based on 5 projects achieved by ORIS during 2022. The figures reported are the most favorable reduction scenario.

Improving Resilience and Adaptation to Climate Change

ORIS worked with the Asian Development Bank (ADB) to perform an expert due diligence for the upgrade of section 1 of the highway A380 in Uzbekistan. The 25-km section runs from Turtkul towards Nukus and is to be widened from one lane per way to two lanes per way, with a separated carriageway. Multi-criteria simulations were performed on the platform including an assessment of risks linked to climate change over 40 years to anticipate resilience of the project.

Resilience studies integrate predictions on the impact of climate change on five parameters: heat, frost/thaw cycles, run-off flooding, land-sliding and silting. The analysis conducted showed that the A380 section 1 is at high risk of heat rise, heavy cycle of frost/thaw, increase of water run-off and silting. For each risk, a set of countermeasures was identified to mitigate those risks such as concrete pavement to reduce stress from high heat and plantation of vauxhall tress to limit effects of silting.

Overall, the analysis identified a \$19.4M investment on adaptation and mitigation measures to limit damages and avoid early repair needs.



TEAM

To support its rapid growth phase, ORIS is structuring its team around its main expertises (construction materials experts, environmental engineers and IT/data specialists) along with business development and support functions.

In 2022, ORIS hired 17 new permanent employees and is projecting to hire 15 more employees in 2023.

The team is very international with 10 nationalities represented and 15 languages spoken within the team.

How do our employees talk about us?
Discover more in these videos!



21 employees



20 FTEs non direct employees



24% of females



Average age 35 years old

Sales & Business Development

33%

Infrastructure and Engineering Experts

24%

Technological Development

14%

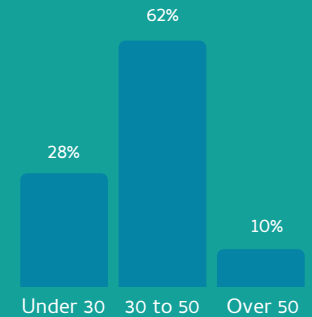
Data Experts

14%

Support Functions

14%

Breakdown by roles



Age Breakdown

Based in France

Based in other EU countries

Breakdown by Geographies

Headcount and data based on permanent contracts and apprentices as of December 31, 2022



A POSITIVE SOCIAL IMPACT THROUGH OUR PARTNERS

SOCIAL

As a responsible actor committed to sustainability, ORIS is partnering with international organizations to generate a positive social impact through its operations.

ORIS strengthens its collaboration with iRAP to build safer roads



ORIS and iRAP (international Road Assessment Program) are working together to integrate iRAP's Star Ratings into the ORIS platform. iRAP Star Ratings are used for road safety inspection/impact assessments and are an objective measure of the level of safety which is 'built-in' to the road through more than 50 road attributes that influence risk for vehicle occupants, motorcyclists, bicyclists, and pedestrians.

The integration of the information flow from ViDA (iRAP's processing engine for Star Ratings) enables an automatic flow of the Star Ratings results into the ORIS dashboard.

Improving Road Safety in Uzbekistan

ORIS performed with the Asian Development Bank (ADB) a multi-criteria impact assessment for the upgrade of a 25-km section of the A380 in Uzbekistan. Road safety was among the dimensions analyzed.

The assessment using the iRAP methodology allowed to identify an improvement plan - evaluated at \$7.1M - which consists of a mix of roadside barriers, shoulder rumble strips and speed reductions at critical sections.

After implementation of countermeasures identified:



★ UN Safety Target of minimum 3 stars reached

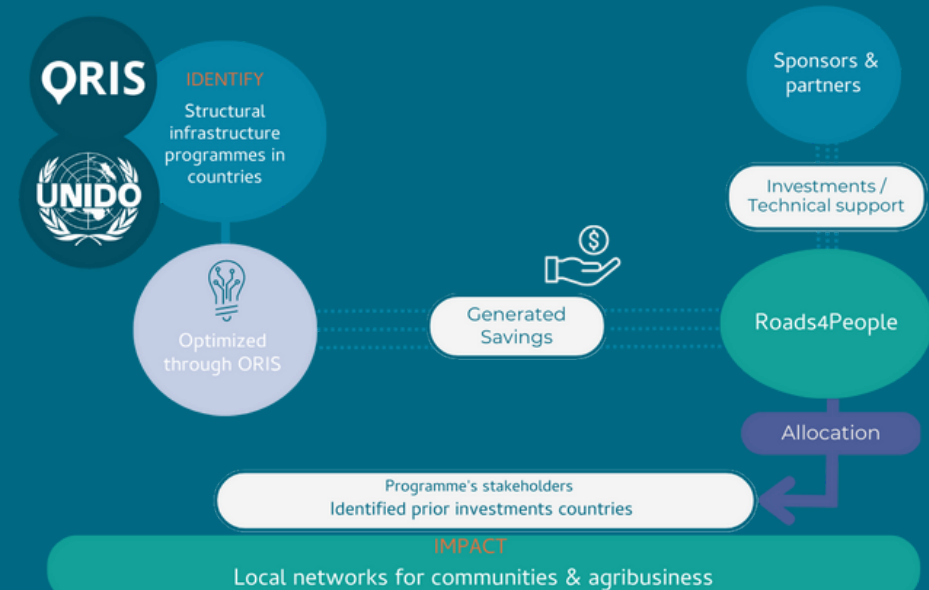
1,800+ serious injured and fatalities avoided



ORIS partners with UNIDO to develop an innovative inclusive program to build rural roads

The United Nations Industrial Development Organization (UNIDO) and ORIS are partnering to develop a unique program for rural roads. The aim of both organizations is to ensure a just distribution of investments in transportation infrastructure, in particular in road networks. Efficient and safe road networks in rural areas remain critical. Studies show that infrastructure constraints reduce productivity by up to 40% in developing countries and under developed infrastructure inhibits business and access to healthcare and markets.

In countries selected to join the program, large infrastructure projects will be optimized to generate financial savings using the capabilities of ORIS, through better designs and reduced maintenance needs. The financial savings from the optimization of those projects will then be transferred into a Rural Road Fund to finance rural road networks.



ENSURING A RESPONSIBLE BUSINESS APPROACH

ORIS was founded as an independent neutral entity in 2021. The company has strict governance rules to ensure neutrality in its commercial operations and in its data management.

Those rules include:

- A dedicated team, with no overlaps in other organizations;
- A balanced Supervisory Board with an independent Board member;
- A strict data protection policy aligned with GDPR standards.



Magali ANDERSON
President of the
Supervisory Board



Edelio BERMEJO
Board Member



Susanna ZAMMATARO
Independent Board
Member



Karine UZAN-MERCIE
Board Member

Data Protection and Privacy

ORIS is committed to protecting personal data and being transparent regarding the manner personal data are being processed.

Our IT and Data teams are responsible to secure the privacy, availability and integrity of data, leveraging technology, business and organizational practices.

Our teams take utmost care to process personal data in accordance with the principles set forth in the data protection legislation applicable in the countries where ORIS operates, including (EU) Regulation 2016/679 on the protection of natural persons with regards to the processing of personal data and on the free movement of such data, and repealing Directive 95/46/EC ("GDPR").

As part of our Data security strategy, ORIS intends to comply with the ISO 27001 directive (Information security management systems) within 12 months. ORIS will seek certification and audit of these requirements.

Our Data Privacy Policy is further outlined on our website.



Conducting our Day-to-Day Operations in a Responsible Manner

As a responsible company, ORIS is committed to act with integrity in its day-to-day operations. All ORIS employees have signed the company's Code of Business Conduct which defines rules to ensure ethical business integrity in all its aspects, including:

- Strict anti-bribery and corruption behaviour;
- Compliance with applicable governmental trade sanctions and embargoes that affect trade;
- Respect of fair competition;
- Disclosure of conflicts of interest;
- Fair treatment regardless of gender, race or any other differences.

ENGAGING WITH KEY PLAYERS TO BUILD MORE SUSTAINABLE INFRASTRUCTURE

ORIS ambitions to make data knowledge on construction materials accessible to all players of the infrastructure eco-system. To support this goal, the company works with key players along the value chain and within the digital ecosystem to leverage and exchange expertise.



More than 20 trusted partners and customers



Public policy vision to build more sustainable infrastructure

ORIS is convinced that considering construction materials from the early stage of linear infrastructure designs will make the difference in terms of sustainability, resiliency and cost-efficiency. Each project is unique and is in a unique sourcing environment. We believe infrastructure projects design should take into account:

- Local sourcing: the best material is local and sometimes right under our feet;
- Circular economy: identification of materials available for reuse during the design stage avoids the use of primary natural resources;
- Carbon footprint: considering the carbon footprint through whole life cycle analysis (LCA) ensures a thorough identification of the main areas of carbon reduction;
- Durability and resilience: the longevity of a road, including its resistance to extreme weather events, is essential to avoid multiple maintenance work and ensure a long service to communities.

ORIS engages with international organizations such as the International Road Federation, GI Hub, Multinational Development Banks, PIARC, etc. to promote these views.

ORIS and AECOM to collaborate on carbon impact assessments for road designs

In 2022, ORIS signed a Memorandum of Understanding (MoU) with AECOM, one of the world's most trusted infrastructure consultancy firm, to collaborate on carbon impact assessments for road designs. The organisations will pursue joint opportunities to assess the carbon emissions of road projects to enable engineers to quickly compare different design solutions and scenarios.

The MoU follows a successful pilot project to measure the sustainability performance of the A50 Groby Road Corridor project for Leicester City Council. Working with AECOM, the ORIS platform generated multiple pavement scenarios with a key focus on carbon emissions and cost estimates.



Carbon emissions
-38%



Costs -20%

Key Indicators for the
A50 Groby Road Corridor Design Optimization





ORIS Materials Intelligence

for Sustainable Infrastructure

Contacts

Nicolas MIRAVALLS
CEO

Elodie WOILLEZ
Head of Communications and Public Affairs

hello@oris-connect.com

54-56 avenue Hoche, 75008 Paris, FRANCE

